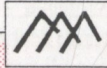


69. *Stachytarpheta cayenensis*  
70. *Stripnodendron barbatiman*  
71. *Symphytum officinale*  
72. *Syzygium jambolanum*  
73. *Tradescantia diuretica*  
74. *Xilopia sericea*

gervão roxo  
barbatimão  
confrei  
jambolão  
trapoeraba  
embiriba



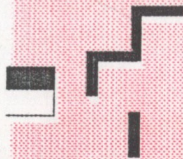
**Contacts:**

Cyrene dos Santos Alves  
Medicinal Plants Research Manager

**CEME-Central de Medicamentos**  
Coordenadoria de Pesquisa e  
Desenvolvimento - COPESQ

**Address:**

Setor Comercial Sul, quadra 02 bl. "C"  
nº 256 Edifício Toufic  
Cep 70.300-500 Brasília-DF BRASIL  
Fax number: (061) 226 9737  
Telex number: (061) 2452/4213  
Pabx number: (061) 313 8511

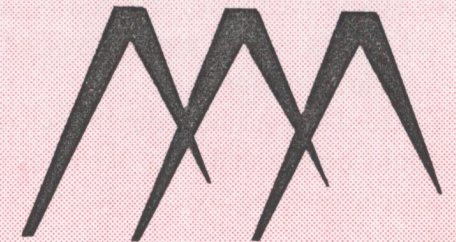
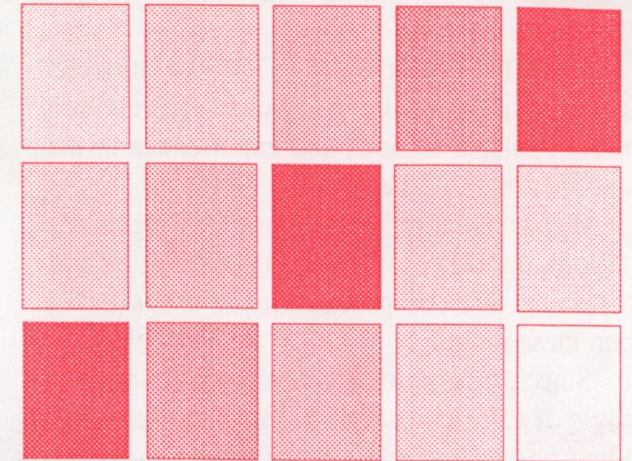


Ministério da Saúde

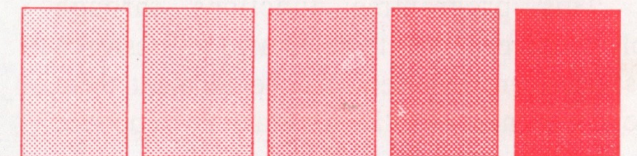
Ezequiel 47:12

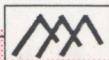
CEME Ministry of Health  
Medicines Centre

Federative Republic of Brazil



**MEDICINAL  
PLANTS RESEARCH  
PROGRAMME**





# Medicinal Plants Research Programme

The MPRP was created in 1983 and its exact purpose was to promote a scientific research about popular traditions and experiences in the use of herbal remedies.

By having these informations the Programme was looking for a promotion in plant culture and processing and the production of drugs based upon these plants.

Since the beginning the Programme involves people of various disciplines from the scientific society and promoted meetings, conferences and seminars.

Through these events they selected 74 kinds of medicinal plants which were classified by their pharmacological properties.

It was decided that the method in this scientific research would be divided into 3 phases: the pharmacological tests; the toxicological tests and the clinical tests.

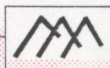
At this moment the MPRP also provides a cultivation and biotechnology work.

Until 1994 the MPRP intends to develop studies to identify and extract the active principles of the selected plants which have been investigated and approved by the research. The herbal material would be supplied by the credential distribution centers.

This programme functions through collaborative contracts celebrated by research institutes, companies, etc. At the moment there are 23 credential establishments and 95 supported

projects.

There are 28 concluded studies about the listed plants of the MPRP. The research concluded showed a lot of results like negative efficacy of some plants; some level of toxicity of others and, of course, plants with positive results on all the steps like "MAYTENUS ILICIFOLIA" and "PHYLLANTUS NIRURI" which have been described on the official publications as "PHARMACOLOGICAL, TOXICOLOGICAL AND CLINICAL TESTS OF CYMBOPOGON CITRATUS" and "A REPORT ON THE STUDY OF A ANTI GASTRIC ULCER ACTION OF THE MAYTENUS ILICIFOLIA".



## List of Selected Plants

Scientific Name	Popular Name
01. <u>Achyrocline satureoides</u>	marcela
02. <u>Ageratum conyzoides</u>	menstrato
03. <u>Allium sativum</u>	alho
04. <u>Alpinia nutans</u>	colônia
05. <u>Amaranthus viridis</u>	brede
06. <u>Anona muricata</u>	graviola
07. <u>Anona squamosa</u>	pinha
08. <u>Arrabidaea chica</u>	pariri
09. <u>Artemisia vulgaris</u>	artemisia
10. <u>Astronium urundeuva</u>	aroeira
11. <u>Baccharis trimera</u>	carqueja
12. <u>Bauhinia affinis</u>	unha-de-vaca
13. <u>Bauhinia forficata</u>	unha-de-vaca
14. <u>Bixa orellana</u>	urucu
15. <u>Boerhavia hirsuta</u>	pega pinto
16. <u>Brassica oleraceae</u>	couve
17. <u>Bryophyllum callicynum</u>	folha da fortuna
18. <u>Caesalpinia ferrea</u>	jucá
19. <u>Carapa guianensis</u>	andiropa
20. <u>Cecropia glaziovii</u>	embaúba

21. <u>Chenopodium ambrosioides</u>	mastruço
22. <u>Cissus sicyoides</u>	cipó-pucá
23. <u>Coleus barbatus</u>	boldo
24. <u>Costus spicatus</u>	cana do brejo
25. <u>Croton zehtnery</u>	canela de cunhá
26. <u>Cucurbita maxima</u>	abóbora
27. <u>Cuphea aperta</u>	sete sangrias
28. <u>Cymbopogon citratus</u>	capim-cidrão
29. <u>Dalbergia subcymosa</u>	veronica
30. <u>Dioclea violacea</u>	mucunha
31. <u>Elephantopus scaber</u>	língua-de-vaca
32. <u>Eleutherine plicata</u>	marupari
33. <u>Foeniculum vulgare</u>	funcho
34. <u>Hymenaea courbaril</u>	jatobá
35. <u>Imperata exaltata</u>	sapé
36. <u>Lantana camara</u>	cambará
37. <u>Leonotis nepetaefolia</u>	cordão de frade
38. <u>Lippia alba</u>	falsa melissa
39. <u>Lippia gracillis</u>	alecrim
40. <u>Lippia sidoides</u>	alecrim
41. <u>Luffa operculata</u>	cabacinha
42. <u>Matricaria chamomilla</u>	camomila
43. <u>Maytenus ilicifolia</u>	espinheira santa
44. <u>Melissa officinalis</u>	erva cidreira
45. <u>Mentha piperita</u>	hortelã
46. <u>Mentha spicata</u>	hortelã
47. <u>Mikania glomerata</u>	guaco
48. <u>Momordica charantia</u>	melão-de-São-Caetano
49. <u>Musa sp</u>	bananaeira
50. <u>Myrcia uniflora</u>	pedra-ume-caá
51. <u>Nasturtium officinale</u>	agrião
52. <u>Passiflora edulis</u>	maracujá
53. <u>Persea americana</u>	abacateiro
54. <u>Petiveria alliacea</u>	tipi
55. <u>Phyllanthus niruri</u>	quebra-pedra
56. <u>Phytolacca dodecandra</u>	"endod"
57. <u>Piper callosum</u>	elixir paregórico
58. <u>Plantago major</u>	tanchagem
59. <u>Polygonum acre</u>	erva de bicho
60. <u>Portulaca pilosa</u>	amor crescido
61. <u>Pothomorphe peltata</u>	caapeba do Norte
62. <u>Pothomorphe umbellata</u>	caapeba
63. <u>Psidium guajava</u>	goiabeira
64. <u>Pterodon polygalaeiflorus</u>	sucupira branca
65. <u>Schinus terebentifolius</u>	aroeira
66. <u>Scoparia dulcis</u>	vassourinha
67. <u>Sedum prealtum</u>	bálsamo
68. <u>Sollanum paniculatum</u>	jurubeba