

# IMPLEMENTATION OF CLINICAL PRACTICE GUIDELINES – THE MALAYSIAN EXPERIENCE

DR SIVALAL SADASIVAN

Monash University Sunway Campus

# BACKGROUND

- Clinical Practice Guidelines (CPG) - produced since 1992
- Initially - consensus statements
- Later – CPG
- Drawn up by Academy of Medicine Malaysia & disseminated by Health Care Quality Unit, Ministry of Health Malaysia
- 2001 - coordination of CPG under purview of Health Technology Assessment Unit - organization structure & work process reviewed & reorganised.

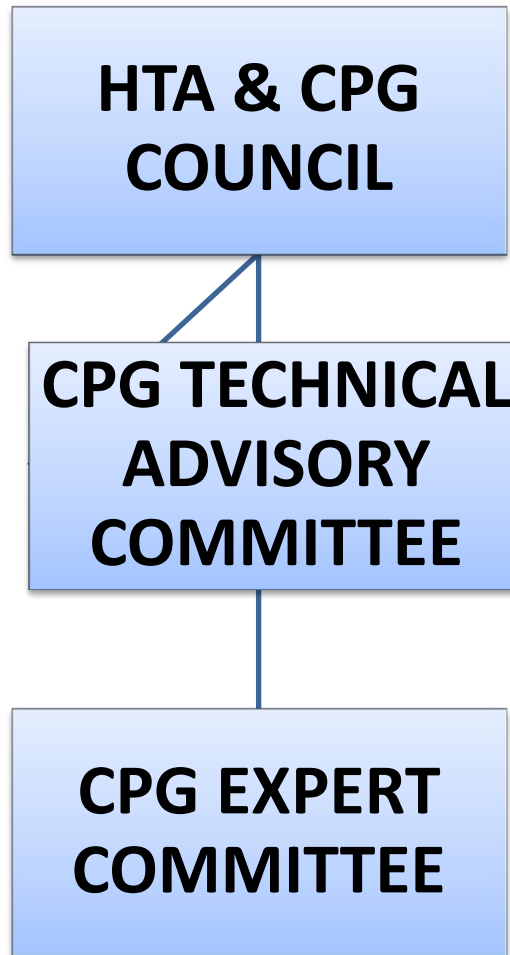
# CHALLENGES FACED IN IMPLEMENTATION

- Concerns about quality of CPG - lack of acceptability of CPG
- Lack of ownership – no involvement in CPG formulation
- Reluctance to be involved due to
  - perceived difficulties in formulation of CPG
  - Lack of expertise
- Lack of systematic process
- Lack of awareness

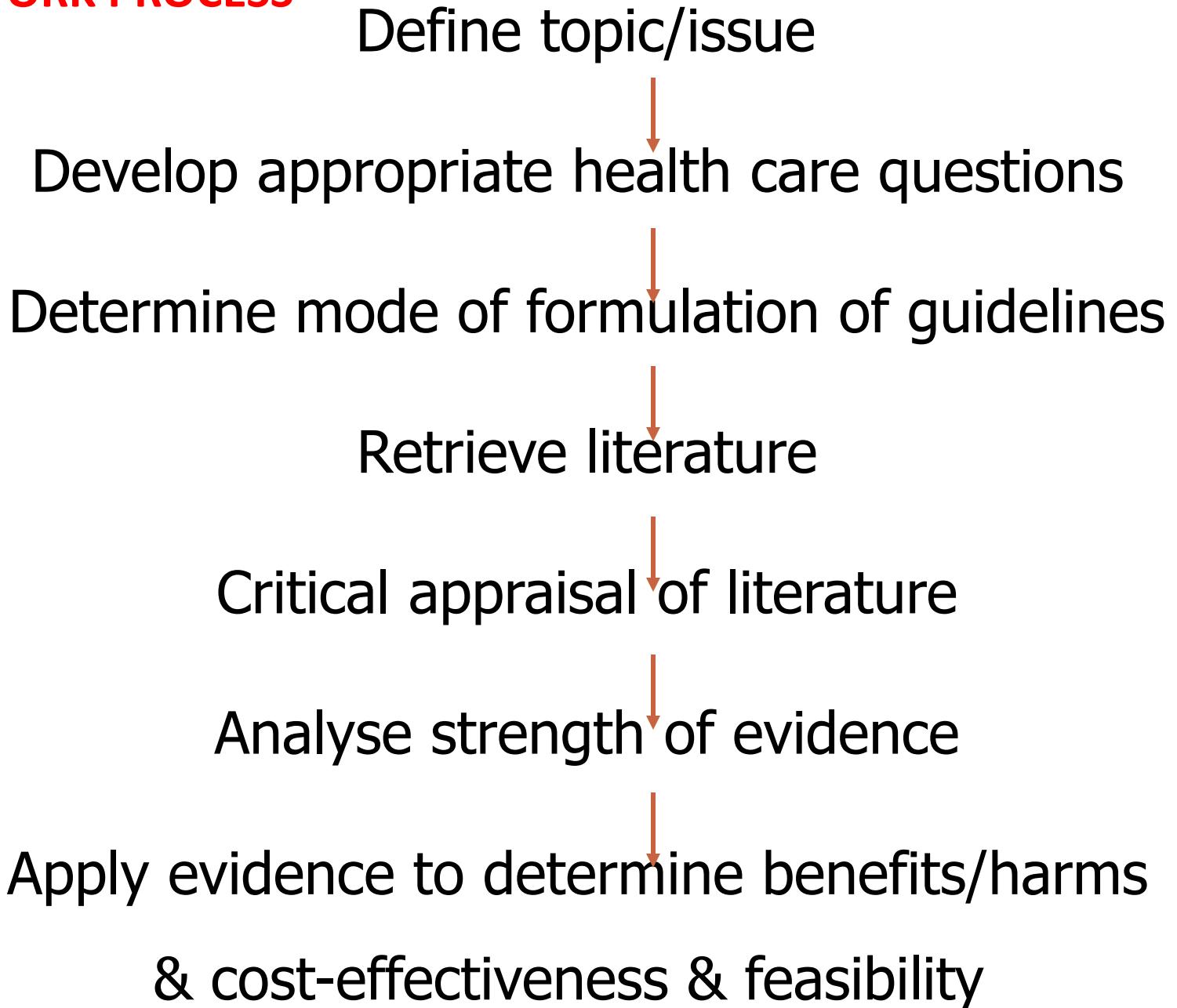
# STRATEGIES TO IMPROVE IMPLEMENTATION

- setting up of organisation structure with formal process of approval – accepted as national policy
- Clear process for CPG formulation
- Standardization of format for CPG
- Emphasis on attributes & evidence base for CPG
- Guidelines for formulation of CPG produced
- Training in systematic reviews provided
- Formal committees set up for each CPG
- Guidance & support provided to CPG committees
- Improved dissemination
- evaluation format for CPG drawn up
- implementation through clinical pathways

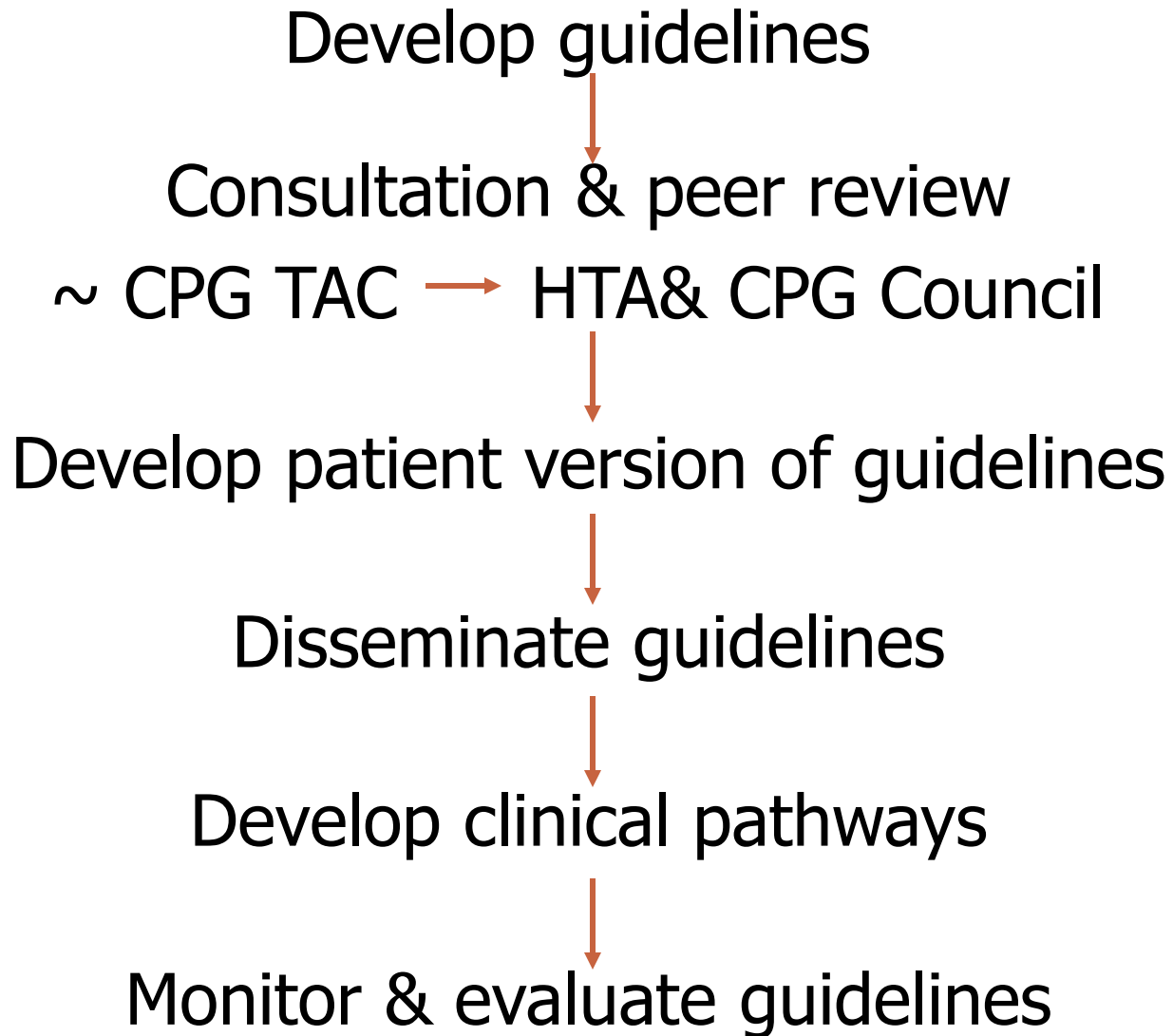
# ORGANISATION STRUCTURE FOR CLINICAL PRACTICE GUIDELINES



## CPG WORK PROCESS



## CPG WORK PROCESS



# FORMAT OF CPG

**1. OBJECTIVES**

**2. CONTENTS**

**About the guideline:**

*Foreword, Development team, External validation, Documentation, Acknowledgements*

*Guideline Information – Introduction, Summary, Detailed guideline, Supporting evidence (Summary of the evidence, Evidence tables), Appendix, Related information*

*References - References quoted, Linked material used in the review (web-links), Other supporting material e.g. other guidelines*

**Algorithms**



# CPG - ATTRIBUTES

- valid
- clear
- reliable & reproducible
- clinically applicable
- clinically flexible
- multidisciplinary involvement
- scheduled review
- processes clearly documented

# CPG – EVIDENCE-BASED

- evidence to be specified
- methodology of obtaining evidence
- strength of evidence
- date of most recent evidence
- listing of evidence
- use of expert evidence to be indicated (in absence of evidence)

# GUIDELINES FOR CPG FORMULATION

- CPG guidelines developed in 2002 to assist in development of CPG
- Guidelines –well received - revised & reprinted in 2003
- Guidelines
  - organizational structure
  - work process & methodology
  - formats for request for CPG
  - Contents of CPG
  - evaluation format for CPG

# TRAINING IN SYSTEMATIC REVIEWS

- Training in systematic reviews methodology has been provided to specialists
- workshops - hands-on training in retrieving evidence, practice in critical appraisal, methods of synthesis of evidence

# GUIDANCE & SUPPORT FOR CPG COMMITTEES

- Assistance provided in selection of members of CPG committee
- training provided to committees
- Coordination of meetings
- Guidance provided to committee
- Assistance in searching for evidence & getting full text articles where necessary
- individual drafts from members merged to produce draft CPG
- draft - reviewed & edited

# IMPROVED INVOLVEMENT & DISSEMINATION OF CPG

- draft CPG put on web-site & comments invited from other specialists
- final CPG - Ministry of Health Malaysia web-site & Academy of Medicine Malaysia web-site - allows free downloading of CPG
- limited number of printed copies distributed to health care facilities.

# EVALUATION FORMAT

- Evaluation format drawn up for CPG
- CPG committee ensures that CPG meets elements of format
- Feedback can be provided by filling in evaluation format

# INCREASING AWARENESS OF CPG

- Clinicians advised to draw up local guidelines based on national guidelines – not very successful
- Wide dissemination of CPG - made easily accessible
- CPG discussed at continuing medical education (CME) sessions & educational lectures provided
- CPG workshops - to get local clinicians involved in the utilization of guidelines - impact could not be sustained.



# IMPLEMENTATION OF CPG THROUGH CLINICAL PATHWAYS

- clinical pathways - means of implementing CPG
- clinical pathways drawn up based on CPG - taking into account local resource constraints & local practices